

# UNDERSTANDING SOCIAL POSITIONING



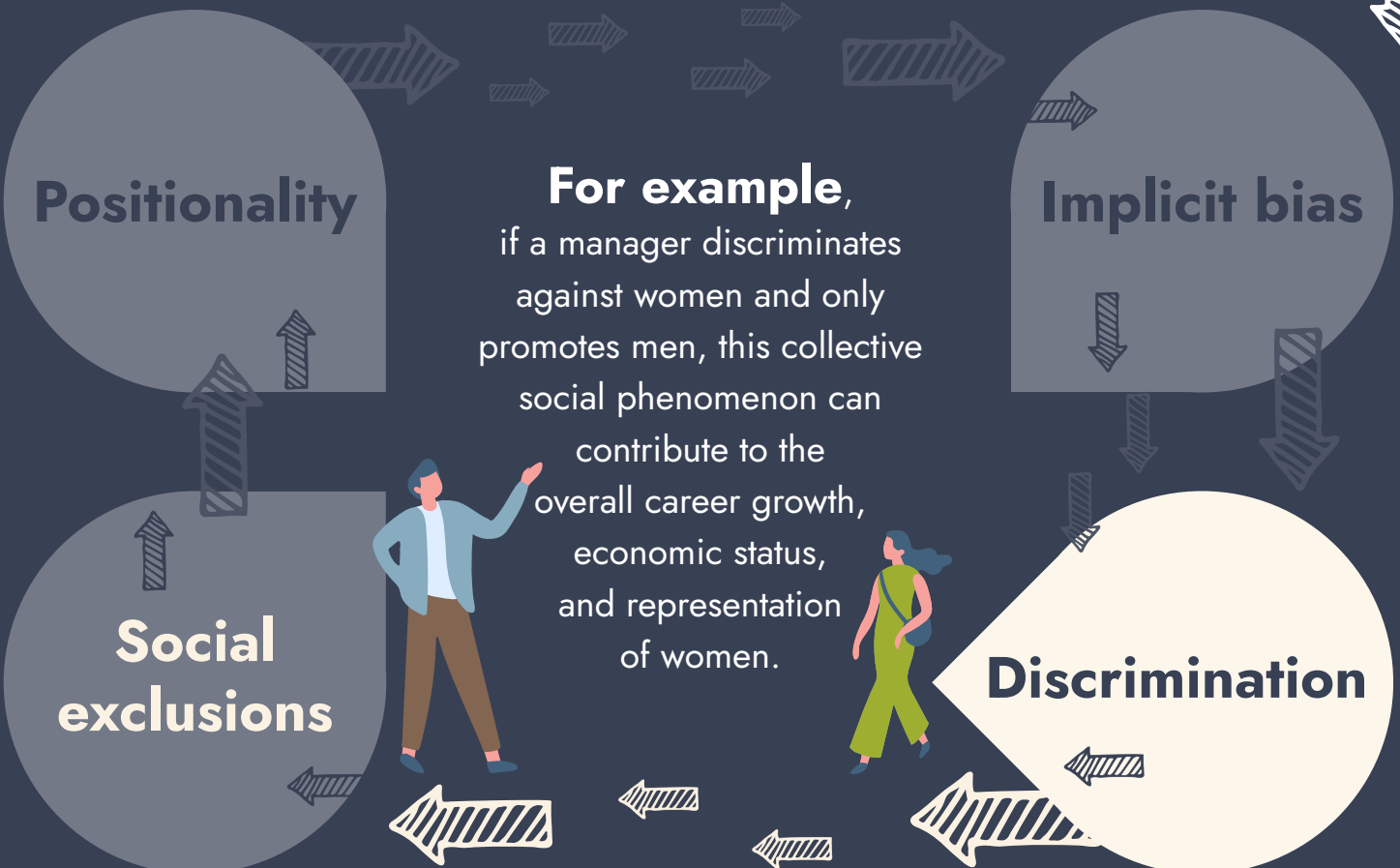
With examples of women in the workplace

## DISCRIMINATION

Treating people **disrespectfully** or **unfairly** based on their identity. This may not always be a conscious action.



When there is repeated discrimination against certain groups of people, they may end up being **excluded from social systems**, including employment or positions of power.



[Click here to view our series of Social Positioning Infographics](#)